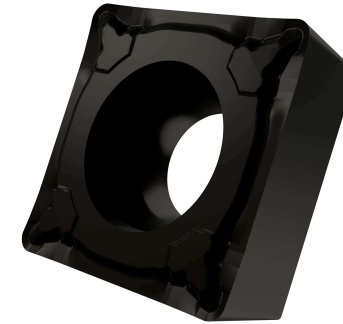




# SCMT.UR 32.52 Z9

## APPLICATION

- Suitable for fine to heavy machining of steels
- Continuous and interrupted cut



## GRADE Z9

This grade is a MT-CVD coated functionally graded WC-Co carbide within ISO range P15 - P35, for fine to heavy machining of steels

	STEEL	STAINLESS	CAST IRON	NON FERROUS	S.ALLOYS	HEAT TREATED
GROUP	P15 - P35	M15 - M35	K15 -K35			
Sfm ft/min	509 - 902	295 - 541	476 - 853			
Fn Inch/rev	.006 - .017	.007 - .016	.006 - .017			
ap Inch	.031 - .118	.031 - .118	.031 - .118			

### LEGEND

Sfm (Vc)	Surface Feet per Minute
Fn (ipr)	Feed per revolution
Fz (ipt)	Feed per tooth
ap	Depth of cut

### FORMULA

$S \text{ (RPM)} = Sfm * 12 / \pi / D = \text{rev per minute}$
$F \text{ (IPR, inch per revolution)} = S * Fn = \text{feed per minute}$
$F \text{ (IPM, inch per minute)} = S * Fz * n.\text{flutes} = \text{feed per minute}$
$Sfm = S * D * \pi / 12$

**TURNING CARBIDE INSERT**