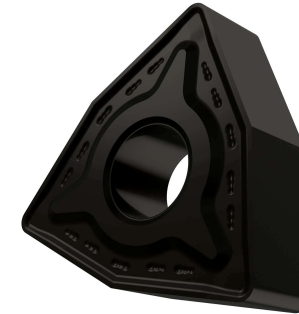


WNMG.RM 433 Z7



APPLICATION

- Suitable for medium to heavy machining of steels and stainless-steels
- Continuous and interrupted cut



GRADE Z7

This grade is a MT-CVD coated functionally graded WC-Co carbide within ISO ranges P20 - P45 and M15 - M40, for medium to heavy machining of steels and stainless-steels

	STEEL	STAINLESS	CAST IRON	NON FERROUS	S.ALLOYS	HEAT TREATED
GROUP	P20 - P45	M15 - M40			S15 - S40	
Sfm ft/min	459 - 804	262 - 476			82 - 213	
Fn Inch/rev	.010 - .028	.011 - .025			.011 - .019	
ap Inch	.059 - .197	.059 - .197			.059 - .157	

LEGEND

Sfm (Vc)	Surface Feet per Minute
Fn (ipr)	Feed per revolution
Fz (ipt)	Feed per tooth
ap	Depth of cut

FORMULA

$S \text{ (RPM)} = \text{Sfm} * 12 / \pi / D = \text{rev per minute}$
$F \text{ (IPR, inch per revolution)} = S * \text{Fn} = \text{feed per minute}$
$F \text{ (IPM, inch per minute)} = S * Fz * n.\text{flutes} = \text{feed per minute}$
$\text{Sfm} = S * D * \pi / 12$

TURNING CARBIDE INSERT